

PERÜCKEN · WIGS · PERRUQUES · PELUCAS · PARRUCHE

Belle Madame[®]



NEWS 2018

by DENING HAIR 

PERÜCKEN WIGS

BelleMadame®
HAIR COLLECTION



EBBA MEDIUM SF 4



EBBA MONO SF 6

SYNTHETIKPERÜCKEN
SYNTHETIC WIGS

SHORT STYLES

EBBA MEDIUM SF	4
EBBA MONO SF	6

BOB STYLES

PRINCESS SF	8
LEA MONO SF	10



PRINCESS SF 8



LEA MONO SF 10

BelleMadame®
Natural Hair Line



REBECCA RH 12

ECHTHAARPERÜCKEN
HUMAN HAIR WIGS

EASY-TO-WEAR STYLES

REBECCA RH	12
------------	----

BelleMadame®
PLATINUM HAIR LINE



THE SMART 14



THE CHARMING 14

PLATINUM HAIR LINE

ECHTHAAR-SYNTHETIK-MIX
HUMAN HAIR-SYNTHETIC-MIX

THE SMART	14
THE CHARMING	14



THE ELEGANT 15



THE STARLET 15

THE ELEGANT	15
THE STARLET	15



EBBA MEDIUM SF

EBBA MEDIUM SF *Fire-Mix*

EBBA MEDIUM SF

●●○○○ ◀ M

SUPER-FRONT

Mono-Wirbel

Mono-Crown

- BROWN** Espresso (2), Dark-Mocca (4/6-4),
Mocca (6/10/30), Chocolate (8/12/30),
Chocolate-Mix (8/27-4)
- BLOND** Chocolate/Cream-Root (10/27/20R+Root10),
Honey-Toast (14/20/25R-12),
Vanilla-Root (14/26+Root14),
Sandy-Blond-Root (20/25R-14+Root14),
Champagne-Root (22H/22+Root12),
Swedish-Blond-Root (25R/22H+Root16)
- RED** Cherry-Coke (2/4/133),
Terracotta-Gold (8/27R-8),
Terracotta-Root (33/130+Root2),
Red-Power-Mix (135/130/4),
Fire-Mix (130/133/135+Front-Orange-Flame)
- GREY** 38/39, Salt & Pepper (44/51/60),
45-36-39, 56/53-39, 60-56-51, 60/101,
Ice-Blond-Root (101/22H+Root10),
101/14-14



EBBA MEDIUM SF
Fire-Mix



360°

EBBA MEDIUM SF
Chocolate/Cream-Root



EBBA MONO SF

EBBA MONO SF *Chocolate-Mix*

EBBA MONO SF



SUPER-FRONT

- BROWN** Espresso (2), Dark-Mocca (4/6-4),
Mocca (6/10/30), Chocolate (8/12/30),
Chocolate-Mix (8/27-4)
- BLOND** Chocolate/Cream-Root (10/27/20R+Root10),
Honey-Toast (14/20/25R-12),
Vanilla-Root (14/26+Root14),
Sandy-Blond-Root (20/25R-14+Root14),
Champagne-Root (22H/22+Root12),
Swedish-Blond-Root (25R/22H+Root16)
- RED** Cherry-Coke (2/4/133),
Terracotta-Gold (8/27R-8),
Terracotta-Root (33/130+Root2),
Red-Power-Mix (135/130/4)
- GREY** 38/39, Salt & Pepper (44/51/60),
45-36-39, 56/53-39, 60-56-51, 60/101,
Ice-Blond-Root (101/22H+Root10),
101/14-14



EBBA MONO SF
Chocolate-Mix



EBBA MONO SF 60/101



PRINCESS SF

PRINCESS SF *Blueberry-Grey*

PRINCESS SF

●●○○○ ◀ M

SUPER-FRONT

Mono-Scheitel

Mono-Parting

BROWN Espresso-Copper/Mist (1B/30),
Dark-Mocca (4/6-4),
Mocca (6/10/30),
Cold-Chocolate (5/8/14),
Chocolate (8/12/30),
Chocolate-Mix (8/10/27/20),
Light-Brown/Copper-Mix (8/29-8)

BLOND Caramel-Root (12/27/20+Root8),
Honey-Toast (14/20/25R-12),
Vanilla-Mix-Root (14/20/25R+Root10),
Danish-Blond-Root (20R/22H+Root14),
Prosecco-Mix (22H/14),
Champagne-Root (22H/22+Root12),
Swedish-Blond-Root (25R/22H+Root16)

RED Dark-Purple/Flame (2V/133/135),
Dark-Cherry (4/133/32B),
Dark-Red-Mix (30/6/27-6),
Terracotta-Mix-Root (30/27+Root4)

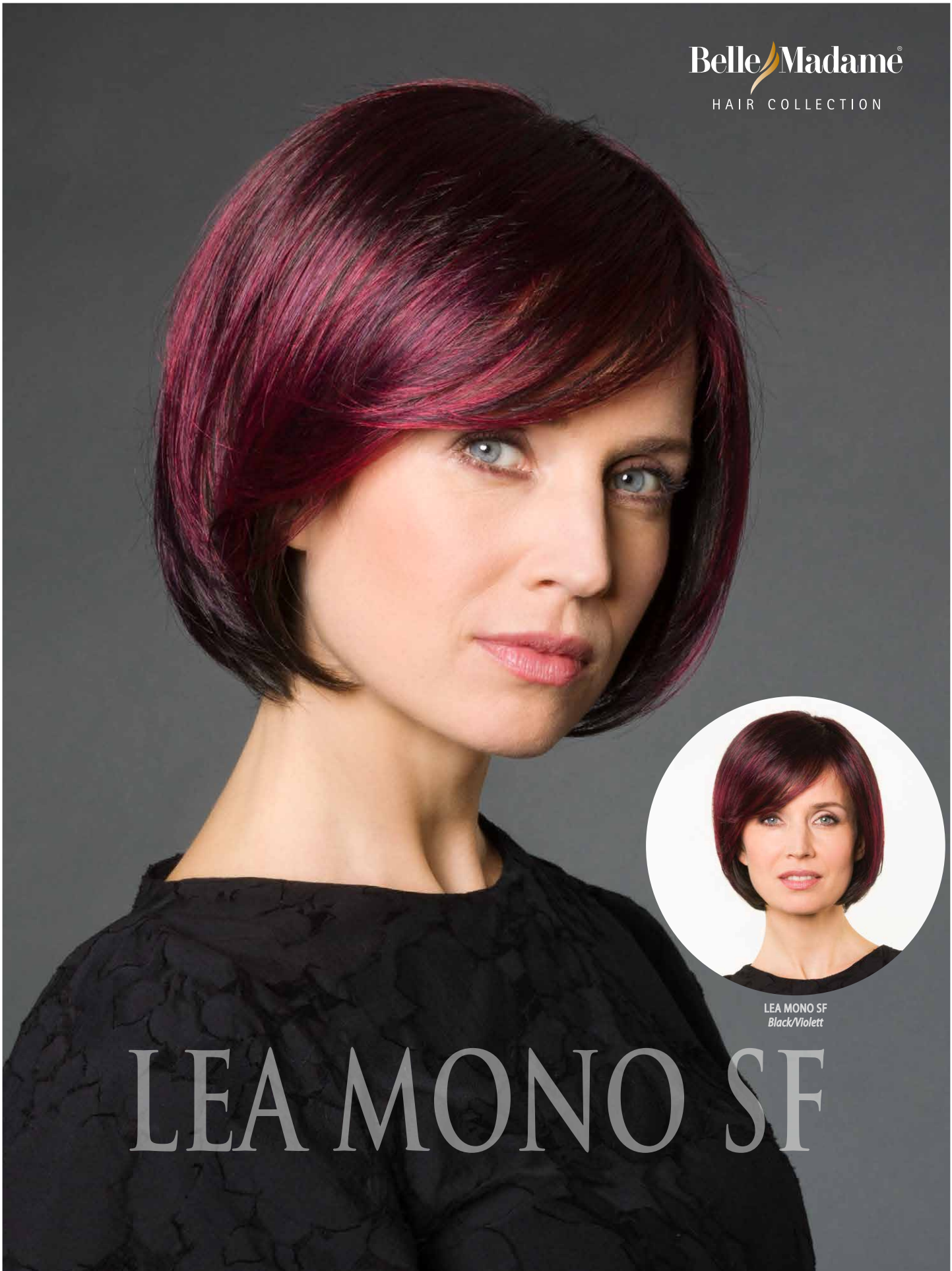
GREY Blueberry-Grey, Salt & Pepper (44/51/60),
56/53-39, 60-56-51, 101/14-14

360°

PRINCESS SF
Prosecco-Mix



PRINCESS SF Prosecco-Mix



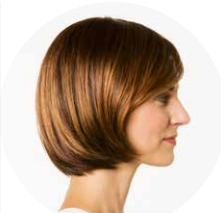
LEA MONO SF
Black/Violet

LEA MONO SF

LEA MONO SF *Black/Violet*



LEA MONO SF Chardonnay-Root



LEA MONO SF

●●●●● ◀ M

SUPER-FRONT

BROWN Espresso (2), Dark-Mocca (4/6-4),
Mocca (6/10/30), Chocolate (8/12/30),
Chocolate-Mix (8/27-4)

BLOND Chocolate/Cream-Root (10/27/20R+Root10),
Honey-Mix (14/20/25R),
Vanilla-Root (14/26+Root14),
Chardonnay-Root (12/25R/27R+Root12),
Champagne-Root (22H/22+Root12),
Swedish-Blond-Gold (22H/25R-20/22)

RED Black/Violett (2V-Violett),
Terracotta-Gold (30/33/27R-8),
Ruby-Mix (33/32B/135/29),
Terracotta-Root (33/130+Root2),
Red-Power-Mix (135/130/4)

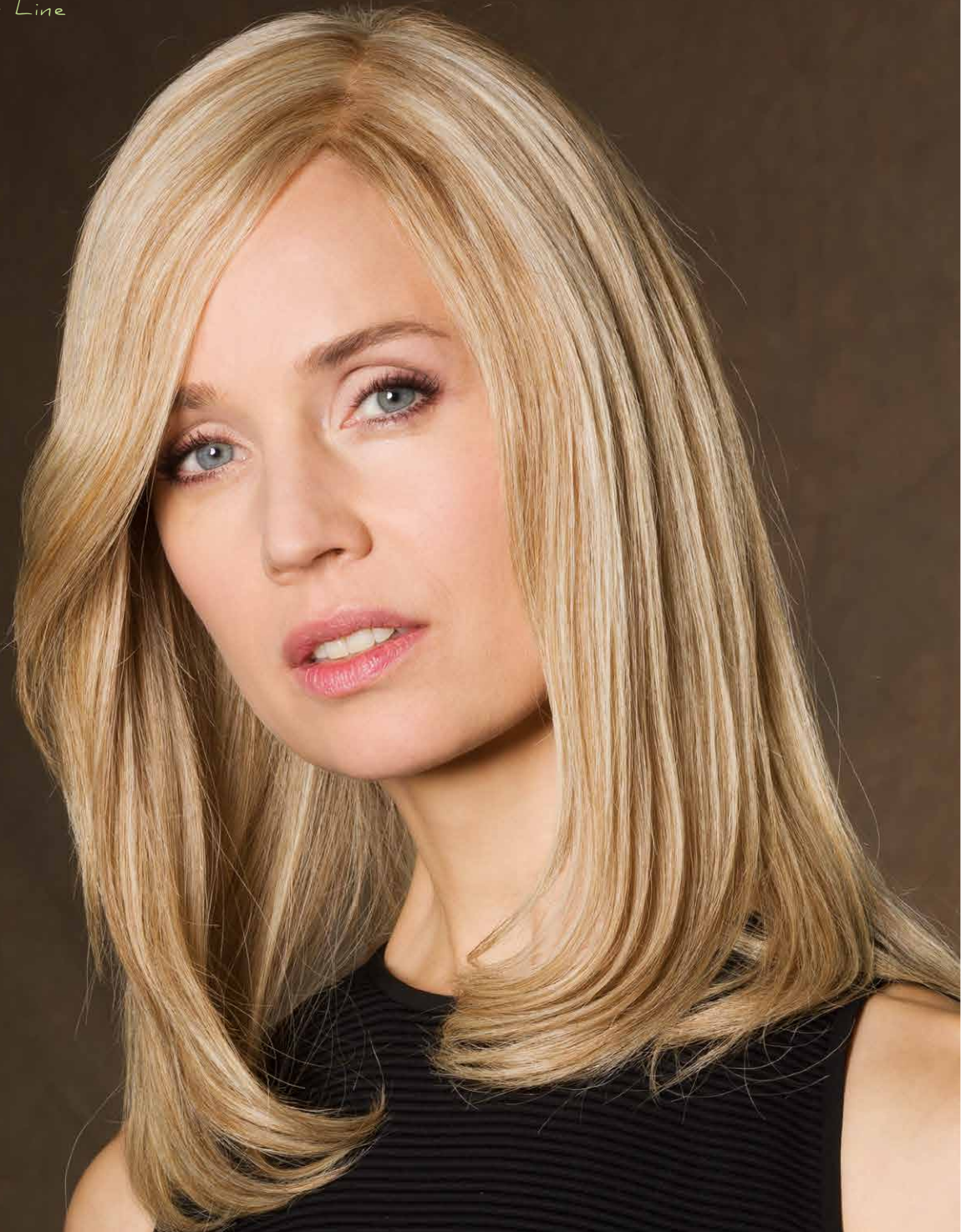
GREY Blueberry-Grey, Pepper-Mix (44/51),
60/101, 101/14-14

360°

LEA MONO SF
Terracotta-Gold

LEA MONO SF Terracotta-Gold

BelleMadame®
Natural Hair Line



ECHTHAAR

REBECCA RH Light-Blond-Mix

NATURAL HAIR LINE

REBECCA RH

●●●●● M (54 - 56 cm)

PU-FRONT

HAARLÄNGE / HAIR LENGTH

25 - 35 cm

HAARDICHTE / HAIR VOLUME

115 - 130 %

BROWN Espresso-Mix (2/4),
Dark-Mocca-Mix (4/8),
Mocca-Mix (6/10-6),
Chocolate-Mix (8/10/27/20)

BLOND Caramel-Root (12/27/22H+Root10),
Honey-Mix (12A/25R/28),
Light-Blond-Mix (15/20/23),
Champagne-Root (20R/23+Root10),
Swedish-Blond-Mix (25R/22H-20+Root16)

RED Light-Copper-Mix (30/27)

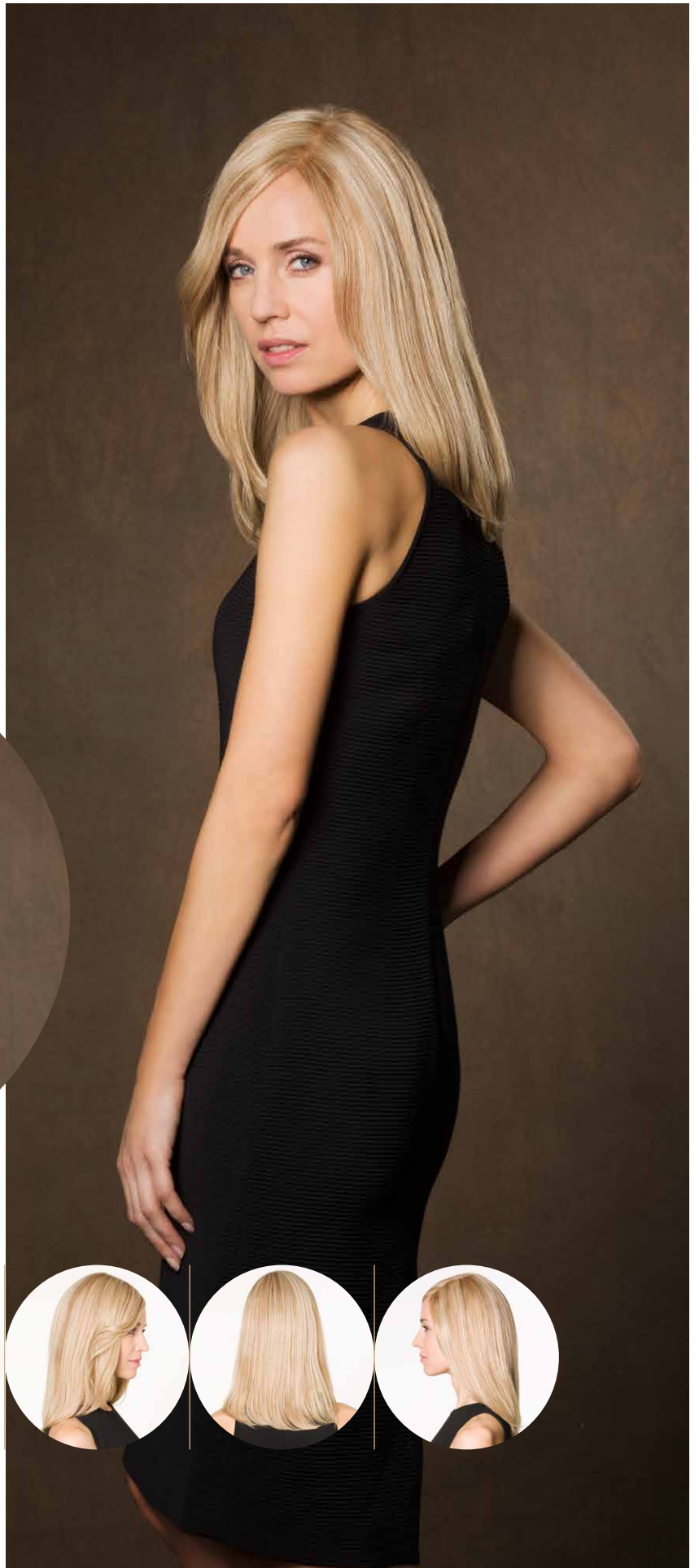
CREATIVE STYLING

REBECCA RH Light-Copper-Mix



360°

REBECCA RH
Light-Blond-Mix



PLATINUM HAIR LINE

THE SMART

●●●●● < S/M

SUPER-FRONT

BROWN Espresso-Mix (2/4),
 Dark-Mocca-Mix (4/8),
 Mocca-Mix (6/10-6),
 Chocolate-Mix (8/10/27/20)

BLOND Caramel-Root (12/27/22H+Root10),
 Honey-Mix (12A/25R/28),
 Light-Blond-Mix (15/20/23),
 Champagne-Root (20R/23+Root10),
 Swedish-Blond-Mix (25R/22H-20+Root16)

RED Light-Copper-Mix (30/27)

THE SMART *Champagne-Root*



PLATINUM HAIR LINE

THE CHARMING

●●●●● < S/M

SUPER-FRONT

BROWN Espresso-Mix (2/4),
 Dark-Mocca-Mix (4/8),
 Mocca-Mix (6/10-6),
 Chocolate-Mix (8/10/27/20)

BLOND Caramel-Root (12/27/22H+Root10),
 Honey-Mix (12A/25R/28),
 Light-Blond-Mix (15/20/23),
 Champagne-Root (20R/23+Root10),
 Swedish-Blond-Mix (25R/22H-20+Root16)

RED Light-Copper-Mix (30/27)

THE CHARMING *Chocolate-Mix*



PLATINUM HAIR



PLATINUM HAIR LINE

THE ELEGANT

●●●●● < S/M

SUPER-FRONT

BROWN Espresso-Mix (2/4),
Dark-Mocca-Mix (4/8),
Mocca-Mix (6/10-6),
Chocolate-Mix (8/10/27/20)

BLOND Caramel-Root (12/27/22H+Root10),
Honey-Mix (12A/25R/28),
Light-Blond-Mix (15/20/23),
Champagne-Root (20R/23+Root10),
Swedish-Blond-Mix (25R/22H-20+Root16)

RED Light-Copper-Mix (30/27)

THE ELEGANT *Dark-Mocca-Mix*



PLATINUM HAIR LINE

THE STARLET

●●●●● < S/M

SUPER-FRONT

BROWN Espresso-Mix (2/4),
Dark-Mocca-Mix (4/8),
Mocca-Mix (6/10-6),
Chocolate-Mix (8/10/27/20)

BLOND Caramel-Root (12/27/22H+Root10),
Honey-Mix (12A/25R/28),
Light-Blond-Mix (15/20/23),
Champagne-Root (20R/23+Root10),
Swedish-Blond-Mix (25R/22H-20+Root16)

RED Light-Copper-Mix (30/27)

THE STARLET *Swedish-Blond-Mix*

**INNOVATION
DES JAHRES**

PLATINUM HAAR

PLATINUM HAAR ist ein Mix aus Echthaar und Kunsthaar. Für den Echthaaranteil wird hochwertiges Remy-Echthaar verwendet. Für den Kunsthaaranteil wird eine hitzebeständige Polyesterfaser verwendet.

PLATINUM HAAR ist bis 180°C hitzebeständig und eignet sich optimal für glatte, flach anliegende Frisuren.

**INNOVATION
OF THE YEAR**

PLATINUM HAIR

PLATINUM HAIR is a mix of human and synthetic hair. High quality Remy human hair is combined with a heat-resistant polyester fiber.

PLATINUM HAIR is heat-resistant up to 180°C and perfectly suitable for straight and flat-fitting hairstyles.



PLATINUM HAIR LINE
Katalog | Catalogue

Belle Madame®
Natural Hair Line

by DENING HAIR



REBECCA RH Light-Blond-Mix  Seite 12 / Page 12